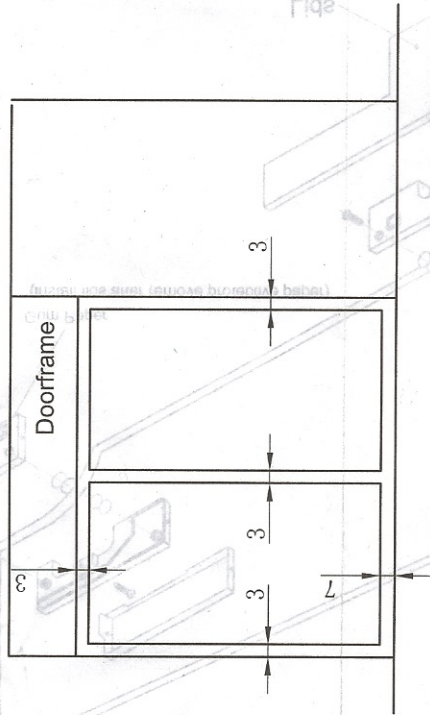


# GLASS DOOR INSTALLATION INSTRUCTION

## 1. Patch fittings

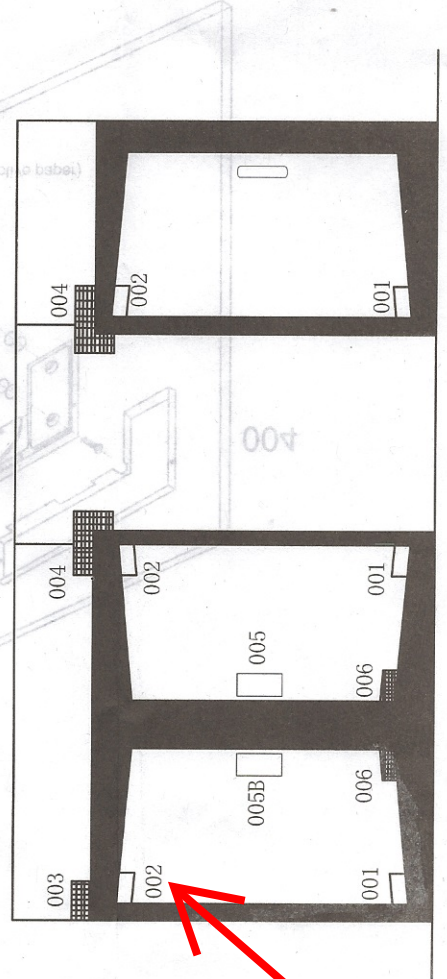
Usage are both decorative and functional products used for glass doors and can be used for floor springs.

## 2. Gaps Between Glass Door and Doorframe:

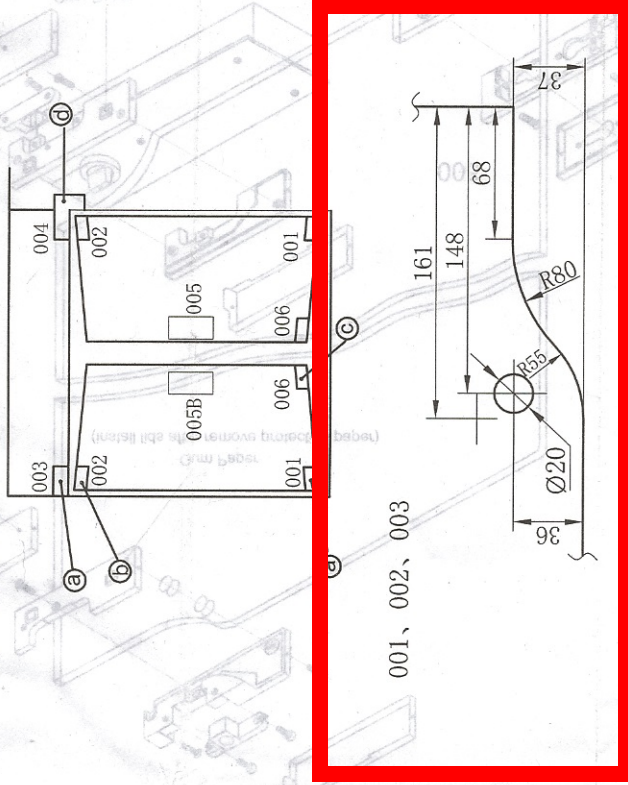


## 3. Installation Positions:

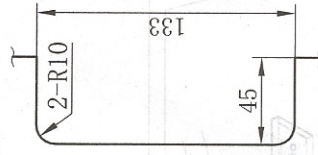
PT10: BOTTOM 002: TOP 003: Upper 004: Corner 006: Look 005: Central Lock 005B: Central



## Glass Door Cutting Dimensions



005, 005B



006

